



AUSTRALIAN BUREAU OF STATISTICS

CANBERRA

LABOUR MOBILITY AUSTRALIA

**DURING THE PERIOD
FEBRUARY 1981 TO FEBRUARY 1982**

CATALOGUE NO. 6209.0

11.30 A.M. 2 SEPTEMBER 1983

**LABOUR MOBILITY AUSTRALIA
DURING THE PERIOD
FEBRUARY 1981 TO FEBRUARY 1982**

R. J. CAMERON

Australian Statistician

AUSTRALIAN BUREAU OF STATISTICS

CATALOGUE NO. 6209.0

© Commonwealth of Australia 1983

PHONE INQUIRIES *for more information about these statistics*—contact Mr Geoff Winter on Canberra (062) 52 6661 or any of our State offices.
other inquiries including copies of publications—contact Information Services on Canberra (062) 52 6627 or in any of our State offices.

MAIL INQUIRIES *write to* Information Services, ABS, P.O. Box 10, Belconnen, A.C.T. 2616 or any of our State offices.

CONTENTS

<i>Table</i>	<i>Page</i>
.. Explanatory notes	1
.. Summary of findings	3
Persons employed at some time during the period February 1981 to February 1982	
1. Summary of labour mobility	6
Number of employers or businesses—	
2. Change in locality while with the same employer or business	6
3. Age and whether employed at February 1982	7
4. Industry and occupation of first job during the period	7
5. Mobility across industry groups	8
6. Mobility across occupation groups	9
Persons who left a job during the period February 1981 to February 1982	
Reason for leaving first job—	
7. Industry	10
8. Occupation	10
9. Status of worker and employment status at February 1982	11
10. Age and marital status	12
Persons employed at February 1982	
Duration of current job—	
11. Age	13
12. Educational attainment	14
13. States and territories	15
14. Industry	16
15. Occupation	17
16. Duration of current job, November 1972 to February 1982	18
17. Mobility across industry and occupation, November 1972 to February 1982	19
18. Job Mobility; February 1976 to February 1982	19
.. Technical note	20

EXPLANATORY NOTES

Introduction

In association with the February 1982 labour force survey conducted throughout Australia, persons aged fifteen years and over who had been employed at some time during the period February 1981 to February 1982 were asked about their labour mobility during the period. Specific questions related to the duration of current job, whether respondents had changed jobs or not and the number of jobs held during the period.

2. During the two weeks beginning Monday 8 February, 1982, specially trained interviewers asked the questions of a sub-sample of 50,000 of the 69,000 respondents in the February labour force survey.

3. A preliminary publication containing a summary of the more important results was published on 20 December 1982. Results of similar surveys, the first conducted in November 1972, were published in previous issues of this publication. For details of the changed reference period between the February 1981 survey and previous surveys, refer to paragraph 11.

Scope

4. The survey includes all civilians aged fifteen years and over except:

- (a) certain diplomatic personnel of overseas governments, customarily excluded from census and estimated populations;
- (b) overseas visitors holidaying in Australia;
- (c) dependants of non-Australian defence forces personnel stationed in Australia;
- (d) students boarding at school, some patients in hospitals and sanatoria and inmates of jails, reformatories etc.

5. The estimates relate to persons covered by the survey in February 1982. Because of emigration, deaths and other exits not all persons with labour force experience during the period were covered. Labour mobility may relate to experience outside Australia.

Definitions

6. For this survey, each person is assigned to a labour force category for each week during the period February 1981 to February 1982 on the basis of his *reported activity* (i.e. whether working, looking for work, etc.) during that week.

7. *Employed persons.* Persons are classified as employed for those weeks they report having either worked or being on paid leave. Periods of one week or more on strike or time off without pay are excluded. Estimates relating to employed persons in this publication differ from estimates published in *The Labour Force, Australia, February 1982 (6203.0)* because of differences in definitions applied in the two surveys.

8. For the purposes of the survey, a *job* is defined as:

- (a) employment as a wage or salary earner (or unpaid family helper) by a particular employer, in a particular locality; or
- (b) self-employment (with or without employees) in a particular locality.

9. *Locality.* In capital cities and major towns each suburb is considered to be a different locality.

10. *Job mobility* is defined as a change of job. A change of job may involve a change of employer without a change of job location; a change of location without a change of employer; or a change in both employer and location. For example, the movement of an employer's operations to premises in a different location would entail a change of job for employees who moved to the new location. Promotion or transfer of an employee which involves a move to premises in a different location would also constitute a change of job. It should be noted, however, that for a person who works at different sites for the same employer (for example, a construction worker), his base of operations (i.e. his employer's office, depot, yard, etc.) is considered to be his place of work.

Discontinuity in the series

11. The estimates in this publication are not strictly comparable with those obtained from previous labour mobility surveys. The reference period for the February 1981 and 1982 surveys was from the beginning of the previous February to the end of the survey week. For this reason the reference period could extend to 54 weeks. In the three surveys February 1976, 1979 and 1980 the reference period was the previous calendar year.

Reliability of the estimates

12. Estimates in this publication are subject to two sources of error:

- (a) *sampling error:* since the estimates are based on information obtained from occupants of a sample of dwellings they are subject to sampling variability; that is they may differ from the figures that would have been produced if all dwellings had been included in the survey. One measure of the likely difference is given by the *standard error*. More information about this topic will be found in the Technical note.
- (b) *Non-sampling error:* inaccuracies may occur because of imperfections in reporting by interviewers and respondents and errors made in the coding and processing of data. These inaccuracies may occur in any enumeration, whether it be a full count or only a sample. Every effort is made to reduce the non-sampling error to a minimum by careful design of questionnaires, intensive training and supervision of interviewers and efficient operating procedures.

Related publications

13. Other ABS publications which may be of interest include:

The Labour Force, Australia (6203.0)-issued monthly

Labour Force Experience, Australia, February 1981 (6206.0)

15. Current publications produced by the ABS are listed in the *Catalogue of Publications, Australia* (1101.0). The ABS also issues, on Tuesdays and Fridays, a *Publications Advice* (1105.0) which lists publications to be released in next few days. The Catalogue and Publications Advice are available from any ABS office.

Symbols and other usages

* subject to sampling variability too high for most practical uses. See paragraph 12 above.

.. not applicable

n.e.c. not elsewhere classified

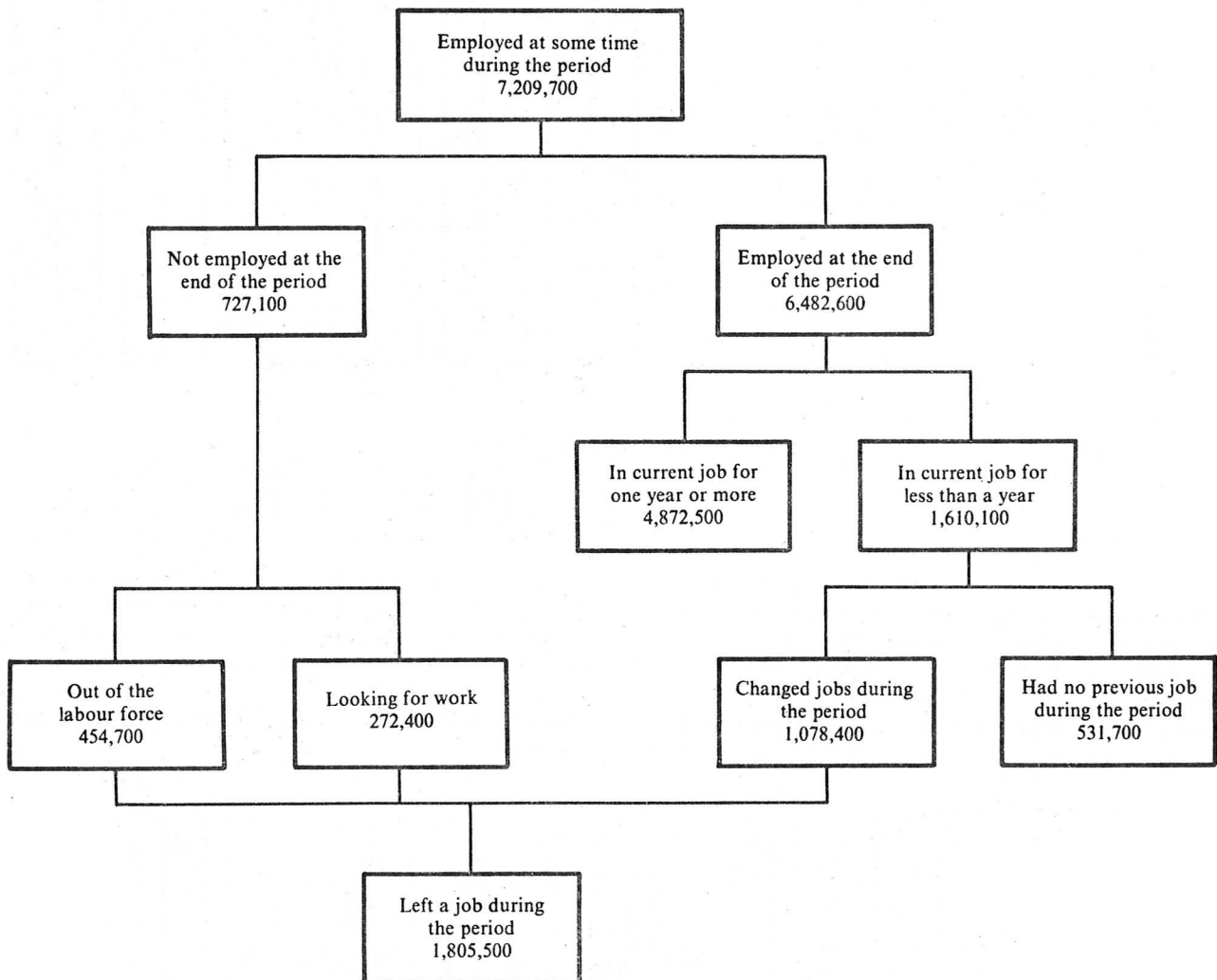
16. Because figures have been rounded, discrepancies may occur between sums of the component items and totals.

SUMMARY OF FINDINGS

7,209,700 persons were employed at some time during the period February 1981 to February 1982 made up of 6,482,600 who were employed in February 1982 and 727,100 who were not employed. 4,872,500 persons had been in the same job for the whole 12 month period. The remaining 2,337,200 (about a third of those who had been employed during the period) had started or left a job during the period.

Less than half (1,078,400) of those who had started or left a job during the 12 month period changed jobs, the remainder either moving into or out of employment. 272,400 had left a job and were looking for work in February 1982 and 454,700 were out of the labour force. 531,700 were entrants to employment; i.e. they were employed in February 1982 having had no previous job during the period. 15.1 per cent of those who had left a job during the period February 1981 to February 1982 were looking for work at the end of the period and 25.2 per cent were out of the labour force.

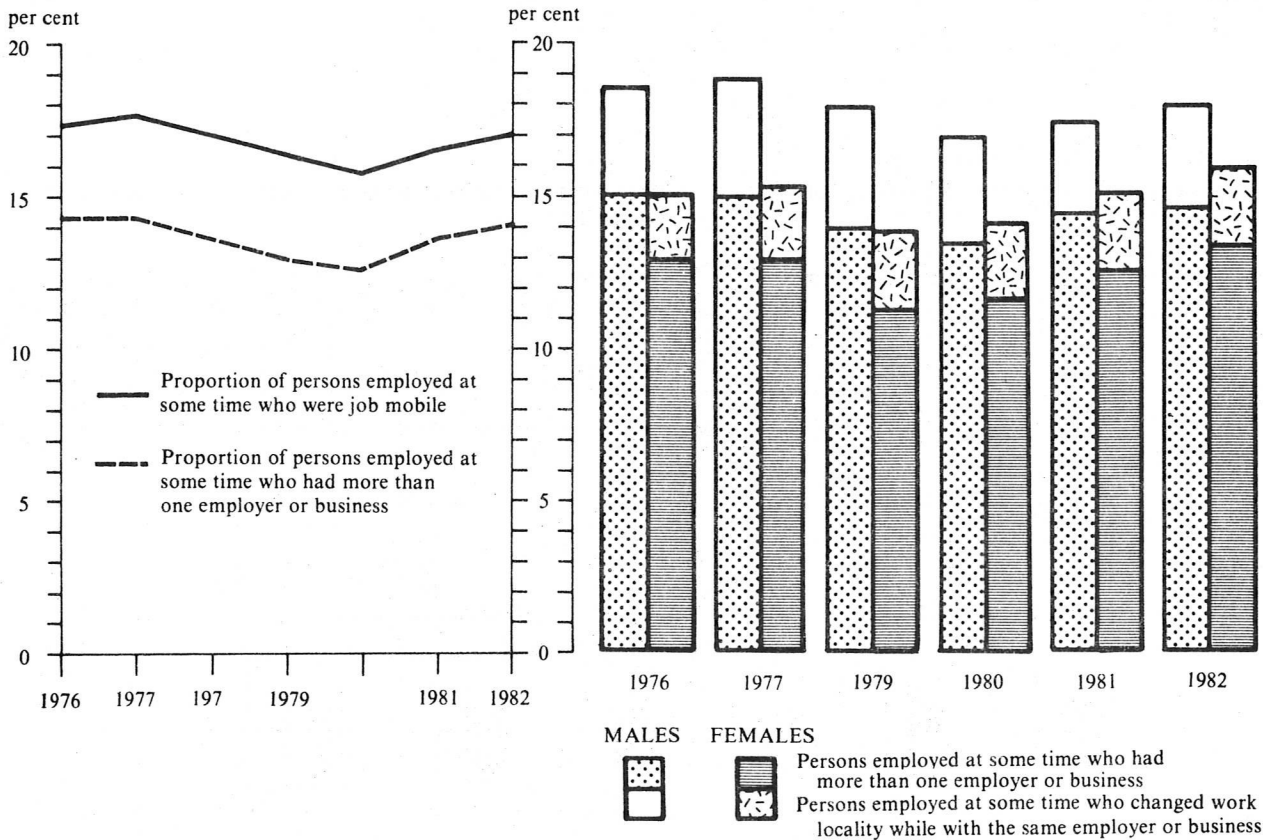
DIAGRAM 1. PERSONS EMPLOYED AT SOME TIME DURING THE PERIOD FEBRUARY 1981 TO FEBRUARY 1982
(Source of data: Table 1)



Job mobility may be defined as having more than one employer during a reference period or changing work locality without changing employer. Of the 7,209,700 persons employed at some time during the period February 1981 to February 1982, 17.1 per cent were job mobile by this definition, comprising 14.1 per cent who had more than one employer or business (including a small proportion who also separately changed work locality) and 3.0 per cent who changed work locality only.

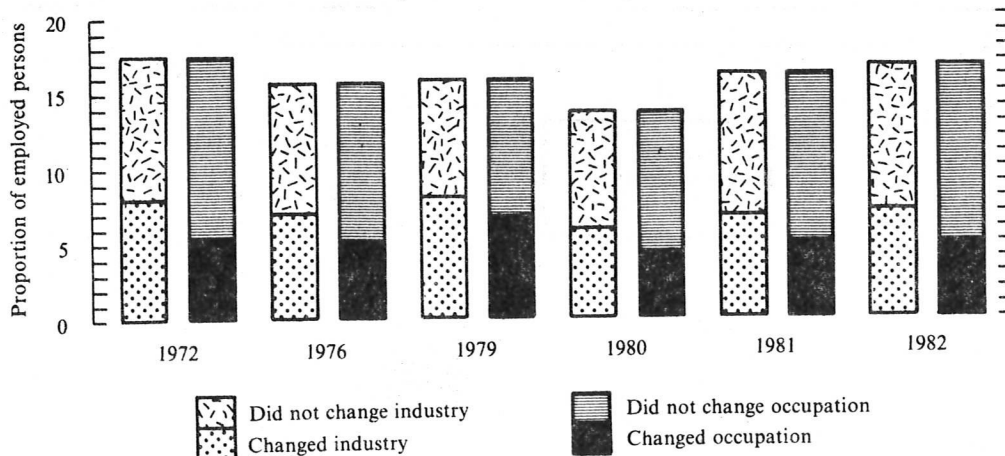
In the February 1976 survey these proportions were 17.2 per cent, 14.2 per cent and 3.0 per cent respectively—almost identical to the current survey results. However, there was a decline in job mobility over the period 1976 to 1980 reaching a low of 15.7 per cent before increasing in 1981 and 1982. Males tended to be more mobile than females—in the twelve months to February 1982, 17.9 per cent of males had been job mobile compared with 15.8 per cent of females.

DIAGRAM 2. JOB MOBILITY: FEBRUARY 1976 TO FEBRUARY 1982
(Source of data: Table 18)



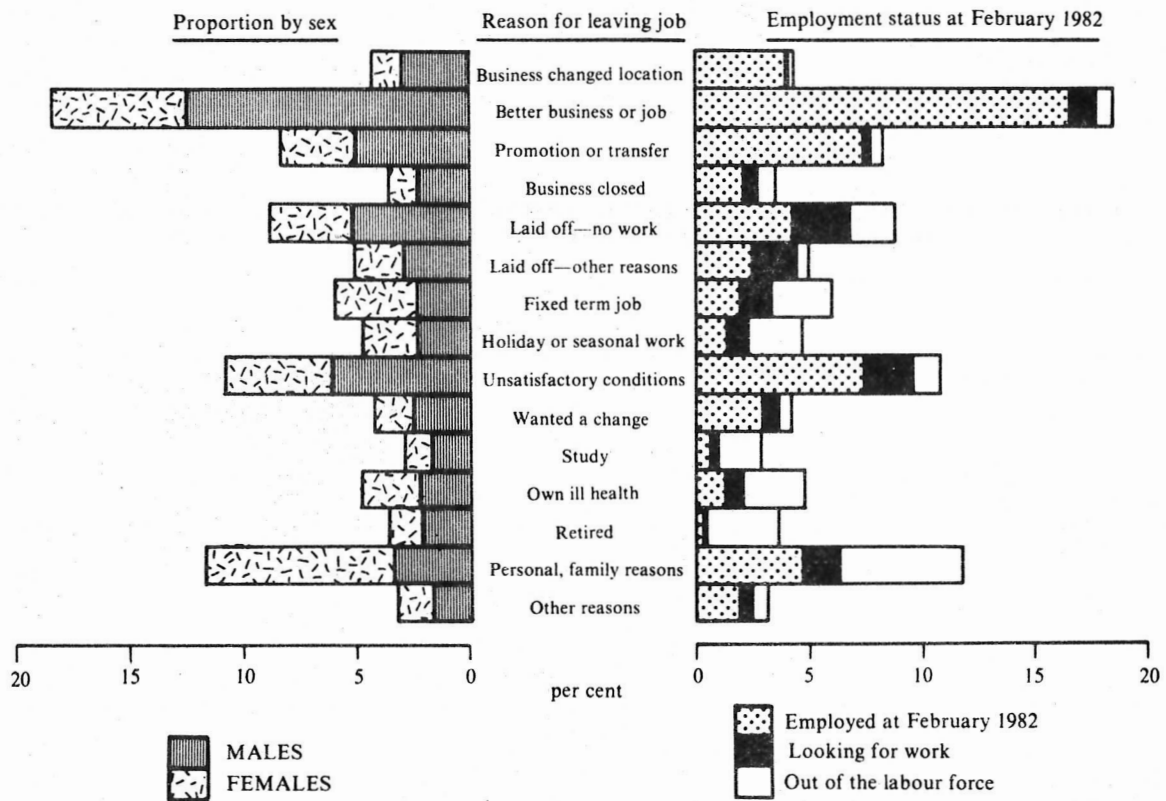
Job changes across occupation groups were less frequent than those across industry groups. About 29.5 per cent of persons who changed jobs during the twelve months to February 1982 changed occupation group, while about 42.0 per cent changed industry group. These proportions have changed little over the past ten years. The greatest mobility occurred in the Construction, Wholesale and Retail Trade and Finance, Property and Business Services sectors. The most stable industries were Community Services and Agriculture.

DIAGRAM 3. EMPLOYED PERSONS: PROPORTION WHO CHANGED INDUSTRY OR OCCUPATION WHEN CHANGING JOBS
(Source of data: Table 17)



Persons who leave jobs report a wide variety of reasons for doing so. Almost one quarter of those who left a job during the period February 1981 to February 1982 did so for reasons outside their control. This group included those laid off, those employed in fixed term jobs and those who lost a job through business closure. At the end of the period, almost half of this group had found another job and approximately a quarter were looking for work. In contrast, the majority of those who left on promotion or for a better job were employed at the end of the period. A significant proportion (about 11 per cent) of persons who left a job gave unsatisfactory working conditions as their reasons for leaving and over two thirds of these were employed at the end of the period. There are significant differences between males and females in the reasons given for leaving a job. Males are more likely to leave for a promotion or a better job, whereas females are more likely to leave for personal or family reasons. Where personal or family reasons are given for leaving a job, the survey suggests these reasons are often of a temporary nature since 40.3 per cent of these persons had found another job by the end of the year and a further 13.6 per cent were looking for work.

DIAGRAM 4. PERSONS WHO LEFT A JOB DURING THE PERIOD: REASON FOR LEAVING JOB
(Source of data: Table 9)



**TABLE 1. PERSONS EMPLOYED AT SOME TIME DURING THE PERIOD FEBRUARY 1981 TO FEBRUARY 1982:
SUMMARY OF LABOUR MOBILITY DURING THE PERIOD
(' 000)**

	<i>Married males</i>	<i>All males</i>	<i>Married females</i>	<i>All females</i>	<i>Persons</i>
Employed at some time during the period	2,926.1	4,398.2	1,727.1	2,811.5	7,209.7
Number of employers worked for(a) (or businesses) during the period—					
1	2,576.0	3,753.5	1,553.7	2,438.8	6,192.4
2	274.1	477.6	145.3	290.4	767.9
3	43.2	88.0	19.0	46.3	134.3
4	18.3	44.0	5.4	20.2	64.2
5	5.6	13.6	*	7.2	20.8
6 and over	9.0	21.4	*	8.6	30.1
Not employed at February 1982	126.9	294.5	282.3	432.6	727.1
Employed at February 1982	2,799.2	4,103.7	1,444.9	2,378.9	6,482.6
For one year or more in current job	2,306.9	3,159.0	1,128.1	1,713.6	4,872.5
For less than one year in current job	492.3	944.7	316.7	665.4	1,610.1
Did not have a previous job during the period	76.8	238.8	139.1	292.9	531.7
Had a previous job during the period	415.5	706.0	177.7	372.4	1,078.4
Left a job during the period	542.4	1,000.5	459.9	805.0	1,805.5
Did not leave a job during the period	2,383.7	3,397.7	1,267.2	2,006.5	5,404.2

(a) Not including second jobs of multiple jobholders.

**TABLE 2. PERSONS EMPLOYED AT SOME TIME DURING THE PERIOD FEBRUARY 1981 TO FEBRUARY 1982:
NUMBER OF EMPLOYERS OR BUSINESSES AND CHANGES IN LOCALITY
(' 000)**

<i>Change in locality while with the same employer or in the same business(a)</i>	<i>Had one employer, business</i>	<i>Had more than one employer, business(a)</i>				<i>Total</i>	<i>Total</i>
		<i>Number of employers, businesses</i>			<i>Total</i>		
		<i>2</i>	<i>3</i>	<i>4 and over</i>			
MALES							
Did not change locality	3,608.6	450.3	81.3	71.8	603.4	4,212.0	
Changed locality	144.9	27.3	6.7	7.3	41.3	186.2	
Number of changes—							
1	123.9	23.3	*	*	30.9	154.8	
2	10.6	*	*	*	4.9	15.5	
3	6.4	*	*	*	*	8.4	
4 and over	*	*	*	*	*	7.4	
Total	3,753.5	477.6	88.0	79.1	644.7	4,398.2	
FEMALES							
Did not change locality	2,369.1	274.3	43.2	32.8	350.3	2,719.4	
Changed locality	69.7	16.1	*	*	22.4	92.1	
Number of changes—							
1	59.9	13.7	*	*	17.1	77.0	
2 and over	9.9	*	*	*	5.3	15.1	
Total	2,438.8	290.4	46.3	36.0	372.7	2,811.5	
PERSONS							
Did not change locality	5,977.7	724.6	124.5	104.6	953.7	6,931.4	
Changed locality	214.6	43.4	9.8	10.5	63.7	278.3	
Number of changes—							
1	183.8	37.0	6.1	4.9	48.0	231.8	
2	17.2	*	*	*	7.1	24.3	
3	7.8	*	*	*	*	11.8	
4 and over	5.9	*	*	*	4.5	10.4	
Total	6,192.4	767.9	134.3	115.1	1,017.4	7,209.7	

(a) Not including second jobs of multiple jobholders. See Explanatory notes, paragraph 8.

TABLE 3. PERSONS EMPLOYED AT SOME TIME DURING THE PERIOD FEBRUARY 1981 TO FEBRUARY 1982: NUMBER OF EMPLOYERS OR BUSINESSES, AGE AND WHETHER EMPLOYED AT FEBRUARY 1982 (' 000)

Age group (years)	Number of employers or businesses									
	Males					Females				
	1	2	3	4 and over	Total	1	2	3	4 and over	Total
EMPLOYED AT FEBRUARY 1982										
15-19	307.9	47.4	11.2	7.7	374.2	245.0	51.8	10.1	6.0	313.0
20-24	409.5	98.0	22.8	21.4	551.7	328.5	65.7	10.5	10.8	415.5
25-34	902.2	145.2	26.2	19.5	1,093.1	516.9	63.4	8.9	7.8	597.0
35-44	795.2	84.1	11.2	7.0	897.6	479.4	43.5	*	*	529.8
45-54	641.3	36.1	*	*	684.7	341.5	16.7	*	*	359.9
55-59	287.8	13.1	*	*	303.0	102.9	*	*	*	106.0
60-64	136.3	*	*	*	139.2	35.0	*	*	*	35.4
65 and over	58.2	*	*	*	60.2	22.3	*	*	*	22.3
Total	3,538.5	428.3	77.0	60.0	4,103.7	2,071.5	244.5	35.6	27.3	2,378.9
NOT EMPLOYED AT FEBRUARY 1982										
15-19	56.2	10.0	5.7	*	73.3	61.4	9.3	5.7	6.5	77.6
20-24	35.9	16.0	7.7	*	62.6	58.0	8.7	*	*	72.0
25-34	32.3	9.1	4.6	*	48.8	110.7	16.7	*	*	132.4
35-44	17.2	6.6	4.8	*	26.7	59.3	6.3	*	*	66.7
45-54	18.3	6.2	*	*	22.9	47.4	*	*	*	51.2
55-59	14.5	*	*	*	16.0	16.9	4.5	*	*	18.3
60-64	24.1	*	*	*	26.3	9.0	*	*	*	9.5
65 and over	16.6	*	*	*	18.0	4.7	*	*	*	4.9
Total	215.1	49.3	11.0	19.1	294.5	367.4	45.8	10.7	8.7	432.6
TOTAL										
15-19	364.2	57.3	14.0	12.0	447.5	306.4	61.1	13.0	10.0	390.6
20-24	445.3	114.0	25.7	29.1	614.3	386.5	74.4	13.3	13.3	487.5
25-34	934.5	154.3	28.9	24.2	1,141.8	627.5	80.1	12.4	9.2	729.3
35-44	812.5	90.7	12.8	8.4	924.3	538.7	49.8	4.7	*	596.5
45-54	659.6	39.6	4.7	*	707.6	388.9	19.8	*	*	411.1
55-59	302.4	13.9	*	*	319.1	119.8	*	*	*	124.3
60-64	160.4	*	*	*	165.5	44.0	*	*	*	45.0
65 and over	74.8	*	*	*	78.2	27.0	*	*	*	27.2
Total	3,753.5	477.6	88.0	79.1	4,398.2	2,438.8	290.4	46.3	36.0	2,811.5

TABLE 4. PERSONS EMPLOYED AT SOME TIME DURING THE PERIOD FEBRUARY 1981 TO FEBRUARY 1982: NUMBER OF EMPLOYERS OR BUSINESSES BY INDUSTRY AND OCCUPATION OF FIRST JOB DURING THE PERIOD (' 000)

	Number of employers or businesses									
	Males					Females				
	1	2	3	4 and over	Total	1	2	3	4 and over	Total
<i>Industry of first job during the period—</i>										
Agriculture, forestry, fishing and hunting	286.8	26.1	8.0	13.8	334.7	113.2	6.2	*	*	122.4
Mining, electricity, gas and water	201.6	14.1	*	*	221.0	343.1	35.8	*	*	386.6
Manufacturing	849.8	127.5	22.7	16.5	1,016.5	20.3	*	*	*	22.4
Construction	381.8	66.2	11.3	15.2	474.5	52.3	4.5	*	*	58.0
Wholesale and retail trade	662.1	107.7	20.2	13.6	803.6	583.6	91.0	12.4	9.9	696.9
Transport and storage; communication	388.4	28.0	7.5	*	428.0	85.3	7.1	*	*	95.0
Finance, property and business services	274.2	34.8	*	*	316.3	251.8	32.6	5.2	*	293.2
Community services	355.6	27.8	4.7	*	391.1	656.3	64.8	9.7	7.1	738.0
Public administration and defence	189.7	17.0	*	*	211.5	100.1	9.9	*	*	112.6
Recreation, personal and other services	163.4	28.3	4.8	4.6	201.1	232.7	37.4	8.3	8.1	286.5
<i>Occupation of first job during the period—</i>										
Professional, technical, etc.	468.2	50.2	5.5	4.9	528.8	421.6	44.3	7.2	6.5	479.6
Administrative, executive and managerial	321.4	38.2	*	*	364.6	61.2	7.1	*	*	69.6
Clerical	318.5	27.8	*	*	351.6	796.5	97.7	16.0	9.4	919.7
Sales	252.0	43.3	9.7	*	308.7	322.3	55.6	7.4	4.6	389.8
Farmers, fishermen, timber-getters, etc.	327.1	31.9	9.1	13.3	381.4	110.3	6.0	*	*	119.2
Miners, quarry workers, etc.	36.3	*	*	*	42.4	*	*	*	*	*
Transport and communication	270.8	28.1	7.6	*	310.8	48.1	*	*	*	53.3
Tradesmen, production-process workers and labourers, n.e.c.	1,550.1	226.1	43.7	43.4	1,863.3	270.9	27.6	*	*	306.2
Service, sport and recreation	209.1	27.5	5.2	4.7	246.6	407.8	48.1	10.1	7.7	473.7
Total	3,753.5	477.6	88.0	79.1	4,398.2	2,438.8	290.4	46.3	36.0	2,811.5

TABLE 5: MOBILITY ACROSS INDUSTRY GROUPS(a)
(' 000)

	Industry of first job(b)										
	Agri- culture	Manu- facturing	Constr- uction	Whole- sale and retail trade	Transport and storage	Finance, property, business services	Public adminis- tration and defence	Com- munity services	Recreation, personal and other services	Other industries	Total
MALES											
Entries to industry group—											
Started in current job during period	12.4	54.2	27.1	61.9	11.8	20.9	9.8	13.3	15.3	12.2	238.8
Started and left job during period	13.2	23.5	13.7	26.3	*	*	*	7.4	11.2	*	107.5
Changed jobs from another group(c)	14.3	57.7	42.2	53.1	19.2	29.1	10.2	20.7	21.7	19.3	287.5
Total	39.8	135.4	83.0	141.3	33.7	54.1	21.9	41.5	48.2	34.9	633.7
Exits from industry group—											
Changed to another group	16.2	73.4	34.4	64.0	19.6	19.2	15.2	16.0	15.4	14.0	287.5
Currently looking for work	12.2	41.6	23.1	34.9	7.7	6.3	4.8	5.7	11.6	7.2	155.0
Out of the labour force	10.0	28.6	14.9	28.2	9.4	8.1	5.7	14.2	14.3	6.0	139.5
Total	38.4	143.6	72.4	127.0	36.7	33.6	25.8	36.0	41.3	27.2	582.0
Same industry group during period—											
Had current job for 1 year or longer	260.4	729.2	313.6	524.7	250.7	222.1	163.1	303.5	123.7	268.0	3,159.0
First and current job, same group	23.5	89.5	61.4	89.9	22.0	39.7	12.9	38.6	20.5	20.3	418.5
Total	283.9	818.8	375.0	614.6	272.7	261.8	175.9	342.1	144.2	288.4	3,577.4
FEMALES											
Entries to industry group—											
Started in current job during period	9.1	39.2	5.5	93.7	*	36.2	8.0	53.9	39.5	4.5	292.9
Started and left job during period	10.1	25.5	*	51.5	*	13.1	10.7	36.1	24.8	*	180.0
Changed jobs from another group(c)	4.8	26.4	4.6	34.8	5.7	29.0	8.3	27.6	20.6	*	165.8
Total	23.9	91.1	11.3	180.0	12.6	78.3	27.0	117.6	84.9	12.1	638.8
Exits from industry group—											
Changed to another group	*	22.2	*	51.2	*	24.3	6.8	25.0	21.9	*	165.8
Currently looking for work	*	18.0	*	38.1	*	9.9	*	20.2	18.7	*	117.5
Out of the labour force	13.8	49.1	*	80.8	*	30.3	12.9	74.8	39.9	6.3	315.1
Total	21.2	89.3	8.6	170.1	9.0	64.5	23.9	120.1	80.5	11.1	598.4
Same industry group during period—											
Had current job for 1 year or longer	88.6	238.2	40.9	379.3	38.8	167.0	76.5	500.1	141.2	43.0	1,713.6
First and current job, same group	*	19.9	*	53.7	*	25.5	*	65.4	23.9	*	206.6
Total	92.1	258.1	43.9	433.1	42.3	192.5	80.6	565.5	165.0	47.0	1,920.2
PERSONS											
Entries to industry group—											
Started in current job during period	21.5	93.4	32.6	155.5	15.3	57.1	17.8	67.2	54.8	16.7	531.7
Started and left job during period	23.2	49.0	15.0	77.8	6.2	17.2	12.5	43.5	36.1	7.0	287.5
Changed jobs from another group (c)	19.0	84.1	46.8	87.9	24.9	58.1	18.5	48.4	42.3	23.3	453.3
Total	63.7	226.5	94.3	321.3	46.3	132.4	48.9	159.0	133.1	47.0	1,272.5
Exist from industry group—											
Changed to another group	20.0	95.5	38.6	115.1	23.5	43.5	22.0	41.1	37.3	16.6	453.3
Currently looking for work	15.8	59.6	24.0	73.0	9.0	16.2	9.1	26.0	30.3	9.5	272.4
Out of the labour force	23.9	77.7	18.4	109.0	13.2	38.4	18.7	89.0	54.2	12.3	454.7
Total	59.6	232.8	81.0	297.2	45.7	98.1	49.7	156.0	121.8	38.4	1,180.4
Same industry group during period—											
Had current job for 1 year or longer	349.0	967.4	354.4	904.0	289.5	389.1	239.6	803.6	264.9	311.0	4,872.5
First and current job, same group	27.0	109.5	64.5	143.7	25.5	65.2	17.0	104.0	44.3	24.4	625.1
Total	376.0	1,076.9	418.9	1,047.7	315.0	454.3	256.6	907.6	309.2	335.4	5,497.6

(a) Industry groups as shown in the column headings of this table. (b) Industry shown relates to first job unless otherwise indicated. (c) Industry of current job.

TABLE 6: MOBILITY ACROSS OCCUPATION GROUPS(a)
(' 000)

	<i>Occupation of first job(b)</i>								<i>Total</i>
	<i>Pro- fessional, technical etc.</i>	<i>Adminis- trative, executive, managerial</i>	<i>Clerical</i>	<i>Sales</i>	<i>Farmers, fishermen, timber- getters etc.</i>	<i>Transport and communi- cation</i>	<i>Tradesmen etc.(c)</i>	<i>Service, sport and recreation</i>	
MALES									
Entries to occupation group—									
Started in current job during period	21.1	10.2	22.4	24.2	16.3	12.7	116.6	15.3	238.8
Started and left job during period	6.2	*	6.4	10.9	15.7	*	53.3	10.3	107.5
Changed jobs from another group(d)	15.5	22.1	15.8	24.1	19.0	22.2	59.3	20.4	198.4
Total	42.9	33.5	44.5	59.2	50.9	38.5	229.1	46.0	544.7
Exits from occupation group—									
Changed to another group	12.2	24.5	16.7	28.8	18.2	20.3	59.6	18.2	198.4
Currently looking for work	5.1	*	8.0	14.7	13.0	9.6	88.3	11.9	155.0
Out of the labour force	13.1	9.0	13.6	13.6	12.9	9.8	54.1	13.4	139.5
Total	30.4	37.9	38.4	57.1	44.2	39.6	202.0	43.4	492.9
Same occupation group during period—									
Had current job for 1 year or longer	405.3	283.8	258.4	196.3	292.6	234.5	1,327.7	160.2	3,159.0
First and current job, same group	72.1	32.7	32.4	31.1	28.3	24.0	259.5	27.6	507.5
Total	477.4	316.5	290.7	227.5	320.9	258.5	1,587.2	187.8	3,666.5
FEMALES									
Entries to occupation group—									
Started in current job during period	32.1	6.7	89.0	54.0	9.2	5.4	36.5	59.9	292.9
Started and left job during period	21.5	*	46.9	32.3	9.9	*	24.4	39.0	180.0
Changed jobs from another group(d)	11.8	6.3	36.3	18.5	5.3	*	15.6	22.5	119.6
Total	65.4	14.8	172.2	104.9	24.4	12.9	76.6	121.3	592.5
Exits from occupation group—									
Changed to another group	13.3	6.2	26.5	31.9	*	*	11.1	23.7	119.6
Currently looking for work	14.7	*	30.6	22.8	*	*	17.8	25.6	117.5
Out of the labour force	44.0	6.7	91.8	47.3	13.6	6.9	40.8	64.0	315.1
Total	72.1	13.8	148.9	102.0	21.5	10.8	69.7	113.3	552.2
Same occupation group during period—									
Had current job for 1 year or longer	318.3	45.7	576.6	205.6	85.5	34.2	179.2	268.5	1,713.6
First and current job, same group	57.1	*	105.1	28.3	*	*	21.1	32.1	252.9
Total	375.4	49.0	681.7	233.8	88.5	37.0	200.3	300.6	1,966.4
PERSONS									
Entries to occupation group—									
Started in current job during period	53.2	16.9	111.5	78.2	25.5	18.2	153.1	75.2	531.7
Started and left job during period	27.7	*	53.3	43.3	25.6	7.8	77.7	49.3	287.5
Changed jobs from another group(d)	27.3	28.4	52.0	42.6	24.3	25.5	74.9	42.9	318.0
Total	108.3	48.3	216.8	164.1	75.3	51.5	305.7	167.3	1,137.2
Exits from occupation group—									
Changed to another group	25.5	30.7	43.3	60.7	22.6	22.6	70.7	41.8	318.0
Currently looking for work	19.8	5.3	38.6	37.5	16.5	11.2	106.1	37.5	272.4
Out of the labour force	57.1	15.8	105.4	60.9	26.5	16.7	94.9	77.4	454.7
Total	102.5	51.7	187.3	159.1	65.6	50.5	271.7	156.7	1,045.1
Same occupation group during period—									
Had current job for 1 year or longer	723.6	329.5	835.0	401.9	378.1	268.7	1,506.9	428.7	4,872.5
First and current job, same group	129.2	36.0	137.5	59.4	31.4	26.7	280.6	59.7	760.4
Total	852.8	365.5	972.5	461.3	409.5	295.5	1,787.5	488.4	5,632.9

(a) Occupation groups as shown in the column headings of this table. (b) Occupation of first job unless otherwise indicated. (c) Includes miners, quarrymen, production-process workers and labourers n.e.c. (d) Occupation of current job.

**TABLE 7. PERSONS WHO LEFT A JOB DURING THE PERIOD FEBRUARY 1981 TO FEBRUARY 1982:
REASON FOR LEAVING AND INDUSTRY IN FIRST JOB**
(' 000)

Reason for leaving first job	Industry of first job(b)										Total
	Agri- culture	Manu- facturing	Constr- uction	Whole- sale and retail trade	Transport and storage	Finance, property, and business services	Public admin- istration and defence	Com- munity and other services	Recre- ation, personal and other services	Other industries	
Business changed location(a)	*	16.5	15.0	19.4	*	6.4	*	*	5.6	*	77.5
Better business or job(b)	12.3	72.5	28.2	92.2	18.2	29.4	10.2	29.0	29.6	9.9	331.4
Promotion or transfer(c)	*	8.0	*	25.0	5.3	29.4	10.6	47.9	*	14.1	149.3
Business closed	*	11.7	7.8	26.6	*	4.6	*	*	4.6	*	63.8
Laid off: no work	8.6	39.1	33.4	34.6	5.6	8.1	*	9.3	15.1	*	158.6
Laid off: other reasons	*	23.6	6.3	33.2	*	6.3	*	5.8	10.7	*	92.9
Fixed term job(d)	*	10.7	7.2	13.4	*	6.4	14.0	33.9	10.1	4.8	107.0
Holiday or seasonal work	26.0	10.8	*	17.8	*	*	*	6.9	10.9	*	84.1
Unsatisfactory conditions(e)	6.3	49.1	11.0	55.5	8.8	18.6	*	18.4	17.4	4.6	194.1
Wanted a change	*	12.2	4.7	13.9	*	6.3	*	14.7	8.0	5.7	75.2
Study	*	6.4	*	15.9	*	4.5	*	9.7	6.1	*	51.1
Own health or medical reasons	5.0	20.5	5.8	22.6	*	5.4	*	9.8	8.8	*	86.3
Retired	*	12.6	4.8	10.9	*	4.6	4.6	11.0	5.8	*	64.7
Personal or family reasons	5.9	39.9	6.7	45.7	6.7	25.3	6.9	48.0	22.1	6.7	213.9
Other reasons(f)	*	8.7	4.5	14.2	*	*	*	10.5	7.4	*	55.7
Total	86.7	342.3	145.5	440.8	71.3	163.2	66.7	260.0	166.2	62.8	1,805.5
Males	61.9	233.1	133.8	217.0	58.7	73.3	38.7	74.6	61.8	47.6	1,000.5
Females	24.7	109.2	11.7	223.9	12.5	90.0	28.0	185.5	104.4	15.2	805.0

(a) Includes home operators who changed residence. (b) Includes starting own business. (c) Includes secondment or transfer as a relief worker (d) Duration of employment was fixed on hiring and has expired. (e) Includes work conditions, transport difficulties, unsuitable hours, etc. (f) Includes a small number of persons from whom no reason was obtained.

**TABLE 8. PERSONS WHO LEFT A JOB DURING THE PERIOD FEBRUARY 1981 TO FEBRUARY 1982:
REASON FOR LEAVING AND OCCUPATION IN FIRST JOB**
(' 000)

Reason for leaving first job	Occupation of first job(b)								Total
	Pro- fessional, technical etc.	Adminis- trative, executive, managerial	Clerical	Sales	Farmers, fishermen, timber- getters etc.	Transport and communi- cation	Tradesmen etc.(g)	Service, sport and recreation	
Business changed location(a)	9.8	7.4	10.9	8.5	*	*	29.8	4.8	77.5
Better business or job(b)	37.9	20.5	49.7	44.0	14.9	15.4	117.0	32.0	331.4
Promotion or transfer(c)	43.2	11.5	41.5	11.4	*	5.4	19.8	15.7	149.3
Business closed	*	6.3	8.2	13.3	*	4.7	23.5	*	63.8
Laid off: no work	10.7	*	17.5	17.2	9.3	6.6	79.5	15.9	158.6
Laid off: other reasons	*	*	14.4	18.6	*	*	35.9	11.3	92.9
Fixed term job(d)	25.5	*	28.5	6.2	6.2	*	20.7	14.0	107.0
Holiday or seasonal work	6.1	*	7.7	7.8	25.4	*	19.8	14.2	84.1
Unsatisfactory conditions(e)	16.6	5.9	36.5	25.9	6.7	8.6	69.0	24.9	194.1
Wanted a change	13.2	*	12.2	7.6	*	*	20.3	10.0	75.2
Study	8.6	*	8.4	8.4	*	*	13.1	9.3	51.1
Own health or medical reasons	5.6	*	11.5	12.0	5.0	5.8	28.6	14.4	86.3
Retired	7.5	6.4	12.4	4.8	5.4	4.5	16.2	7.5	64.7
Personal or family reasons	32.5	9.1	55.4	25.1	6.5	6.8	46.2	32.5	213.9
Other reasons(f)	8.8	6.1	10.0	7.6	*	*	12.7	6.2	55.7
Total	231.7	87.7	324.8	218.4	97.0	77.2	552.3	216.4	1,805.5
Males	102.4	70.6	70.8	88.2	72.5	63.6	461.4	71.0	1,000.5
Females	129.2	17.1	254.0	130.3	24.5	13.6	90.9	145.4	805.0

Footnotes (a)-(f) see previous table. (g) Includes production-process workers, labourers n.e.c., miners and quarry men.

TABLE 9. PERSONS WHO LEFT A JOB DURING THE PERIOD FEBRUARY 1981 TO FEBRUARY 1982:
REASON FOR LEAVING, STATUS OF WORKER IN JOB LEFT AND EMPLOYMENT STATUS AT END OF PERIOD

Reason for leaving first job	Status of worker in job left		Employment status at end of the period				Total	Proportion (per cent)
	Wage or salary earner	Other	Employed	Looking for work	Total in the labour force	Not in the labour force		
—'000—								
MALES								
Business changed location(a)	36.1	19.3	52.4	*	54.6	*	55.4	5.5
Better business or job(b)	207.4	18.1	207.2	13.0	220.2	5.3	225.5	22.5
Promotion or transfer(c)	92.7	*	90.8	*	92.5	*	92.7	9.3
Business closed	23.8	17.1	29.9	7.2	37.2	*	40.9	4.1
Laid off: no work	93.2	5.0	55.4	32.9	88.2	10.0	98.2	9.8
Laid off: other reasons	52.8	*	29.3	21.3	50.5	*	53.2	5.3
Fixed term job(d)	40.8	*	19.7	10.0	29.8	11.5	41.3	4.1
Holiday or seasonal work	39.2	*	16.8	9.6	26.4	14.8	41.2	4.1
Unsatisfactory conditions(e)	107.6	*	83.1	21.1	104.2	6.3	110.5	11.0
Wanted a change	38.6	5.7	35.0	5.9	40.9	*	44.3	4.4
Study	29.8	*	7.6	*	11.3	19.1	30.4	3.0
Own health or medical reasons	33.6	7.0	14.5	9.2	23.8	16.8	40.6	4.1
Retired	32.0	6.1	*	*	4.5	33.6	38.1	3.8
Personal or family reasons	49.9	7.8	39.9	11.3	51.2	6.6	57.8	5.8
Other reasons(f)	25.1	5.1	20.5	5.1	25.6	4.6	30.2	3.0
<i>Total</i>	<i>902.8</i>	<i>97.5</i>	<i>705.8</i>	<i>155.0</i>	<i>860.8</i>	<i>139.5</i>	<i>1,000.3</i>	<i>100.0</i>
FEMALES								
Business changed location(a)	15.7	6.4	19.1	*	19.5	*	22.0	2.7
Better business or job(b)	99.7	6.2	91.2	9.9	101.1	4.8	105.9	13.2
Promotion or transfer(c)	55.4	*	43.5	*	45.8	10.8	56.6	7.0
Business closed	13.3	9.5	8.7	5.5	14.2	8.6	22.8	2.8
Laid off: no work	58.1	*	23.0	14.0	37.0	23.4	60.4	7.5
Laid off: other reasons	39.2	*	16.7	13.8	30.5	9.2	39.7	4.9
Fixed term job(d)	64.9	*	16.7	11.7	28.4	37.3	65.8	8.2
Holiday or seasonal work	39.6	3.4	9.3	6.5	15.8	27.1	42.9	5.3
Unsatisfactory conditions(e)	83.0	*	53.0	17.1	70.0	13.6	83.6	10.4
Wanted a change	28.7	*	17.6	5.9	23.5	7.4	30.9	3.8
Study	19.7	*	*	*	6.0	14.7	20.6	2.6
Own health or medical reasons	42.1	*	9.1	5.6	14.7	31.0	45.6	5.7
Retired	21.3	5.3	*	*	*	25.6	26.6	3.3
Personal or family reasons	145.5	10.7	46.4	17.8	64.2	91.9	156.1	19.4
Other reasons(f)	20.6	4.8	13.0	5.1	18.1	7.2	25.4	3.2
<i>Total</i>	<i>746.7</i>	<i>58.3</i>	<i>372.4</i>	<i>117.5</i>	<i>489.9</i>	<i>315.1</i>	<i>805.0</i>	<i>100.0</i>
PERSONS								
Business changed location(a)	51.8	25.6	71.5	*	74.1	*	77.5	4.3
Better business or job(b)	307.2	24.3	298.4	22.9	321.3	10.1	331.4	18.4
Promotion or transfer(c)	148.1	*	134.3	*	138.3	11.0	149.3	8.3
Business closed	37.1	26.6	38.7	12.7	51.4	12.4	63.8	3.5
Laid off: no work	151.3	7.3	78.3	46.9	125.2	33.4	158.6	8.8
Laid off: other reasons	92.0	*	46.0	35.1	81.0	11.9	92.9	5.1
Fixed term job(d)	105.7	*	36.5	21.7	58.2	48.8	107.0	5.9
Holiday or seasonal work	78.8	5.3	26.1	16.1	42.2	41.9	84.1	4.7
Unsatisfactory conditions(e)	190.6	*	136.1	38.2	174.3	19.8	194.1	10.8
Wanted a change	67.3	7.9	52.6	11.8	64.4	10.8	75.2	4.2
Study	49.5	*	11.8	5.5	17.3	33.8	51.1	2.8
Own health or medical reasons	75.7	10.6	23.6	14.8	38.4	47.8	86.3	4.8
Retired	53.3	11.4	4.5	*	5.5	59.2	64.7	3.6
Personal or family reasons	195.4	18.5	86.3	29.1	115.4	98.5	213.9	11.8
Other reasons(f)	45.7	9.8	33.5	10.2	43.7	11.9	55.6	3.1
<i>Total</i>	<i>1,649.5</i>	<i>158.9</i>	<i>1,078.2</i>	<i>272.4</i>	<i>1,350.7</i>	<i>454.7</i>	<i>1,805.4</i>	<i>100.0</i>

For footnotes (a) to (f) see Table 7.

TABLE 10. PERSONS WHO LEFT A JOB DURING THE PERIOD FEBRUARY 1981 TO FEBRUARY 1982:
REASON FOR LEAVING, CURRENT AGE AND MARITAL STATUS
(' 000)

Reason for leaving first job	Married	Not married	Age at the time of survey (years)					Total
			15-24	25-34	35-44	45-54	55 or more	
MALES								
Business changed location(a)	38.8	16.6	11.1	19.1	13.7	7.2	*	55.4
Better business or job(b)	138.0	87.5	76.9	87.7	43.8	13.2	*	225.5
Promotion or transfer(c)	57.3	35.4	30.9	31.7	19.5	8.7	*	92.7
Business closed	26.4	14.5	11.1	10.6	8.7	5.9	4.6	40.9
Laid off: no work	46.0	52.2	45.2	24.1	11.9	10.0	7.1	98.2
Laid off: other reasons	19.5	33.7	28.5	13.8	5.2	*	*	53.2
Fixed term job(d)	16.7	24.5	20.0	9.3	4.5	*	4.7	41.3
Holiday or seasonal work	12.1	29.0	27.1	5.4	5.1	*	*	41.2
Unsatisfactory conditions(e)	50.9	59.6	49.6	35.5	17.2	6.4	*	110.5
Wanted a change	20.7	23.6	19.7	12.7	6.4	*	*	44.3
Study	*	28.6	27.5	*	*	*	*	30.4
Own health or medical reasons	26.5	14.1	9.1	6.0	7.6	6.4	11.4	40.6
Retired	33.9	*	*	*	*	*	35.0	38.1
Personal or family reasons	33.1	24.6	20.5	18.1	11.0	6.2	*	57.8
Other reasons(f)	20.6	9.7	6.4	10.4	6.9	*	*	30.3
Total	542.4	458.0	383.5	287.2	162.1	82.0	85.7	1,000.5
FEMALES								
Business changed location(a)	14.9	7.1	*	6.7	7.9	*	*	22.0
Better business or job(b)	45.7	60.2	54.9	26.2	16.7	7.2	*	105.9
Promotion or transfer(c)	30.9	25.7	23.9	17.9	8.4	5.4	*	56.6
Business closed	14.5	8.3	6.4	7.4	*	*	*	22.8
Laid off: no work	31.6	28.8	27.9	11.1	12.5	6.3	*	60.4
Laid off: other reasons	12.4	27.3	25.6	5.4	*	*	*	39.7
Fixed term job(d)	38.2	27.6	20.6	19.8	12.2	8.0	5.2	65.8
Holiday or seasonal work	21.5	21.5	17.8	12.6	6.4	*	*	42.9
Unsatisfactory conditions(e)	34.8	48.7	45.0	20.9	11.0	5.6	*	83.6
Wanted a change	14.4	16.5	12.8	9.7	5.1	*	*	30.9
Study	*	18.7	16.7	*	*	*	*	20.6
Own health or medical reasons	33.1	12.6	14.4	12.9	7.9	6.7	*	45.6
Retired	22.2	*	*	*	*	6.7	12.4	26.6
Personal or family reasons	125.3	30.8	50.8	69.0	24.3	9.7	*	156.1
Other reasons(f)	18.3	7.0	6.7	7.7	6.4	*	*	25.4
Total	459.9	345.1	328.4	234.7	129.4	74.8	37.7	805.0
PERSONS								
Business changed location(a)	53.8	23.7	14.8	25.9	21.6	9.7	5.4	77.5
Better business or job(b)	183.7	147.8	131.7	113.9	60.5	20.4	4.9	331.4
Promotion or transfer(c)	88.2	61.1	54.8	49.6	27.9	14.1	*	149.3
Business closed	40.9	22.8	17.6	18.0	12.8	9.4	6.1	63.8
Laid off: no work	77.6	81.0	73.0	35.2	24.3	16.3	9.7	158.6
Laid off: other reasons	31.9	61.0	54.1	19.1	8.8	7.4	*	92.9
Fixed term job(d)	54.9	52.1	40.6	29.1	16.7	10.7	9.9	107.0
Holiday or seasonal work	33.6	50.5	45.0	18.0	1.5	4.7	5.0	84.1
Unsatisfactory conditions(e)	85.7	108.4	94.6	56.3	28.2	12.0	*	194.1
Wanted a change	35.1	40.1	32.5	22.4	11.5	7.0	*	75.2
Study	*	47.3	44.2	6.1	*	*	*	51.1
Own health or medical reasons	59.5	26.7	23.5	18.9	15.5	13.1	15.2	86.3
Retired	56.2	8.6	*	*	*	9.1	47.3	64.7
Personal or family reasons	158.5	55.4	71.2	87.0	35.3	15.9	*	213.9
Other reasons(f)	38.9	16.8	13.0	18.1	13.3	6.7	4.5	55.7
Total	1,002.4	803.1	711.8	521.9	291.6	156.8	123.4	1,805.5

For footnotes (a) to (f) see Table 7

TABLE 11. PERSONS EMPLOYED AT THE TIME OF THE SURVEY : DURATION OF CURRENT JOB AND AGE
(* 000)

Duration of current job	Age group (years)								Total
	15-19	20-24	25-34	35-44	45-54	55-59	60-64	65 and over	
MALES									
Under 3 months	99.3	86.0	90.0	51.9	21.4	6.8	*	*	358.9
3 months and under 6 months	40.1	54.1	75.1	39.7	22.0	5.8	*	*	239.2
6 months and under 1 year	44.3	72.6	113.9	69.7	30.2	9.1	*	*	346.6
<i>Total under 1 year</i>	<i>183.7</i>	<i>212.7</i>	<i>279.0</i>	<i>161.3</i>	<i>73.6</i>	<i>21.8</i>	<i>8.6</i>	<i>*</i>	<i>944.7</i>
1 year and under 2 years	90.1	91.0	151.4	91.3	49.8	19.7	6.0	*	501.4
2 years and under 3 years	53.4	64.3	118.1	75.9	46.1	13.7	5.5	*	379.0
3 years and under 5 years	44.6	105.2	177.7	124.6	83.8	23.9	12.0	5.3	577.1
5 years and under 10 years	*	77.1	231.9	203.9	134.0	57.4	27.7	10.7	744.8
10 years and over	*	*	134.9	240.6	297.5	166.6	79.4	35.9	956.5
<i>Total</i>	<i>374.2</i>	<i>551.7</i>	<i>1,093.1</i>	<i>897.6</i>	<i>684.7</i>	<i>303.0</i>	<i>139.2</i>	<i>60.2</i>	<i>4,103.7</i>
MARRIED FEMALES									
Under 3 months	*	20.6	38.6	28.8	11.8	*	*	*	103.6
3 months and under 6 months	*	12.9	34.6	26.8	11.0	*	*	*	86.9
6 months and under 1 year	*	19.2	54.1	35.3	13.2	*	*	*	126.2
<i>Total under 1 year</i>	<i>*</i>	<i>52.6</i>	<i>127.2</i>	<i>91.0</i>	<i>35.9</i>	<i>4.9</i>	<i>*</i>	<i>*</i>	<i>316.7</i>
1 year and under 2 years	*	27.7	70.0	63.3	24.6	6.1	*	*	193.9
2 years and under 3 years	*	13.9	50.4	45.7	27.1	*	*	*	143.1
3 years and under 5 years	*	25.0	74.7	78.4	39.3	9.5	*	*	232.4
5 years and under 10 years	*	25.7	87.4	116.6	81.2	19.4	7.0	*	338.7
10 years and over	*	*	26.6	55.0	91.1	29.4	10.2	7.6	220.1
<i>Total</i>	<i>8.1</i>	<i>145.3</i>	<i>436.3</i>	<i>450.0</i>	<i>299.2</i>	<i>73.3</i>	<i>22.1</i>	<i>10.6</i>	<i>1,444.9</i>
ALL FEMALES									
Under 3 months	77.3	65.3	58.4	36.4	14.3	*	*	*	255.0
3 months and under 6 months	40.6	40.7	46.5	29.7	12.4	*	*	*	171.7
6 months and under 1 year	50.9	51.5	72.7	42.5	16.9	*	*	*	238.7
<i>Total under 1 year</i>	<i>168.8</i>	<i>157.6</i>	<i>177.6</i>	<i>108.6</i>	<i>43.6</i>	<i>7.7</i>	<i>*</i>	<i>*</i>	<i>665.4</i>
1 year and under 2 years	81.8	72.8	94.0	73.4	28.7	7.6	*	*	360.5
2 years and under 3 years	35.6	53.8	72.4	53.7	33.3	5.7	*	*	255.4
3 years and under 5 years	25.3	77.7	97.9	89.3	48.4	13.2	4.5	*	358.4
5 years and under 10 years	*	53.0	115.4	134.5	97.7	29.2	10.6	*	444.3
10 years and over	*	*	39.6	70.4	108.2	42.6	17.7	15.7	295.0
<i>Total</i>	<i>313.0</i>	<i>415.5</i>	<i>597.0</i>	<i>529.8</i>	<i>359.9</i>	<i>106.0</i>	<i>35.4</i>	<i>22.3</i>	<i>2,378.9</i>
PERSONS									
Under 3 months	176.5	151.3	148.5	88.3	35.7	9.1	*	*	613.9
3 months and under 6 months	80.7	94.9	121.6	69.5	34.4	7.6	*	*	410.9
6 months and under 1 year	95.1	124.2	186.6	112.2	47.1	12.8	*	*	585.3
<i>Total under 1 year</i>	<i>352.4</i>	<i>370.3</i>	<i>456.6</i>	<i>269.9</i>	<i>117.2</i>	<i>29.5</i>	<i>9.1</i>	<i>5.0</i>	<i>1,610.1</i>
1 year and under 2 years	171.9	163.8	245.4	164.7	78.5	27.3	7.4	*	862.0
2 years and under 3 years	89.0	118.1	190.6	129.5	79.4	19.4	6.2	*	634.4
3 years and under 5 years	69.9	182.9	275.6	213.9	132.2	37.1	16.5	7.4	935.5
5 years and under 10 years	*	130.2	347.3	338.4	231.7	86.6	38.3	13.2	1,189.1
10 years and over	*	*	174.5	311.0	405.6	209.2	97.1	51.6	1,251.5
<i>Total</i>	<i>687.2</i>	<i>967.2</i>	<i>1,690.1</i>	<i>1,427.4</i>	<i>1,044.6</i>	<i>409.1</i>	<i>174.6</i>	<i>82.5</i>	<i>6,482.6</i>

TABLE 12. PERSONS EMPLOYED AT FEBRUARY 1982: DURATION OF CURRENT JOB AND EDUCATIONAL ATTAINMENT ('000)

Duration of current job	Without post-school qualifications							Total (c)
	With post-school qualifications			Attended highest secondary level	Did not attend highest level of secondary school and left at age (years)		Total (b)	
	Degree or equivalent	Trade, technical level	Total (a)		16 or over	15 or under		
MALES								
Under 3 months	36.2	91.7	129.3	71.0	66.9	82.7	221.0	358.9
3 months and under 6 months	15.3	80.1	97.3	34.3	41.7	59.8	136.5	239.2
6 months and under 1 year	28.8	124.7	156.2	50.0	55.2	79.4	185.8	346.6
<i>Total under 1 year</i>	<i>80.4</i>	<i>296.5</i>	<i>382.8</i>	<i>155.4</i>	<i>163.8</i>	<i>221.9</i>	<i>543.2</i>	<i>944.7</i>
1 year and under 2 years	46.1	156.1	204.1	77.9	81.0	128.0	287.7	501.4
2 years and under 3 years	36.6	124.5	164.7	49.0	67.5	92.6	209.8	379.0
3 years and under 5 years	57.2	203.2	264.7	70.1	91.4	147.6	309.5	577.1
5 years and under 10 years	72.6	283.2	361.2	66.2	84.1	231.3	383.0	744.8
10 years and over	72.2	340.4	417.7	67.3	84.5	383.9	538.8	956.5
<i>Total</i>	<i>365.1</i>	<i>1,403.9</i>	<i>1,795.2</i>	<i>485.8</i>	<i>572.4</i>	<i>1,205.3</i>	<i>2,272.0</i>	<i>4,103.7</i>
FEMALES								
Under 3 months	24.6	72.7	100.6	43.2	41.3	58.3	142.8	255.0
3 months and under 6 months	8.0	50.4	60.1	21.5	29.9	52.3	103.7	171.7
6 months and under 1 year	13.2	66.9	83.0	34.3	49.7	64.4	148.5	238.7
<i>Total under 1 year</i>	<i>45.8</i>	<i>190.0</i>	<i>243.7</i>	<i>99.1</i>	<i>120.9</i>	<i>174.9</i>	<i>395.0</i>	<i>665.4</i>
1 year and under 2 years	26.3	104.8	133.8	53.1	65.8	95.7	214.9	360.5
2 years and under 3 years	17.6	78.1	98.7	33.7	45.4	73.4	153.4	255.4
3 years and under 5 years	27.6	96.2	127.7	44.9	68.2	115.7	229.5	358.4
5 years and under 10 years	29.7	122.8	157.2	36.9	78.9	169.9	286.9	444.3
10 years and over	13.8	80.4	96.2	22.4	42.4	132.1	198.5	295.0
<i>Total</i>	<i>160.9</i>	<i>672.2</i>	<i>857.3</i>	<i>290.1</i>	<i>421.6</i>	<i>761.7</i>	<i>1,478.1</i>	<i>2,378.9</i>
PERSONS								
Under 3 months	60.8	164.4	229.9	114.2	108.2	140.9	363.7	613.9
3 months and under 6 months	23.3	130.6	157.4	55.9	71.6	112.1	240.2	410.9
6 months and under 1 year	42.0	191.6	239.2	84.4	104.9	143.7	334.3	585.3
<i>Total under 1 year</i>	<i>126.1</i>	<i>486.5</i>	<i>626.5</i>	<i>254.5</i>	<i>284.7</i>	<i>396.7</i>	<i>938.2</i>	<i>1,610.1</i>
1 year and under 2 years	72.4	260.9	337.9	130.9	146.8	223.7	502.6	862.0
2 years and under 3 years	54.2	202.6	263.4	82.7	112.9	166.1	363.2	634.4
3 years and under 5 years	84.9	299.4	392.3	115.0	159.6	263.2	539.0	935.5
5 years and under 10 years	102.3	406.0	518.5	103.0	163.0	401.2	669.9	1,189.1
10 years and over	86.0	420.8	513.9	89.8	126.9	516.0	737.3	1,251.5
<i>Total</i>	<i>525.9</i>	<i>2,076.2</i>	<i>2,652.5</i>	<i>775.9</i>	<i>993.9</i>	<i>1,966.9</i>	<i>3,750.1</i>	<i>6,482.6</i>

(a) Includes persons with other post-school qualifications. (b) Includes persons who never went to school. (c) Includes persons aged 15 to 20 years still at school.

TABLE 13. PERSONS EMPLOYED AT FEBRUARY 1982: DURATION OF CURRENT JOB, STATES AND TERRITORIES ('000)

<i>Duration of current job</i>	<i>N.S.W.</i>	<i>Vic.</i>	<i>Qld</i>	<i>S.A.</i>	<i>W.A.</i>	<i>Tas.</i>	<i>N.T.</i>	<i>A.C.T.</i>	<i>Aust.</i>
MALES									
Under 3 months	117.7	85.8	70.7	28.7	37.7	9.5	3.9	5.0	358.9
3 months and under 6 months	75.9	66.3	46.4	17.7	22.3	4.0	3.3	3.3	239.2
6 months and under 1 year	116.6	84.8	65.4	28.1	34.0	7.0	4.1	6.7	346.6
<i>Total under 1 year</i>	<i>310.2</i>	<i>236.9</i>	<i>182.5</i>	<i>74.5</i>	<i>93.9</i>	<i>20.5</i>	<i>11.2</i>	<i>15.0</i>	<i>944.7</i>
1 year and under 2 years	177.8	130.0	77.1	36.0	52.6	13.1	6.4	8.5	501.4
2 years and under 3 years	139.8	92.9	61.5	30.5	35.2	8.8	3.9	6.3	379.0
3 years and under 5 years	215.6	152.7	78.2	51.1	49.7	15.9	4.5	9.3	577.1
5 years and under 10 years	254.2	198.0	116.3	70.2	63.5	23.1	5.3	14.3	744.8
10 years and over	347.9	272.5	121.3	98.2	71.6	31.7	4.1	9.2	956.5
<i>Total</i>	<i>1,445.5</i>	<i>1,083.0</i>	<i>637.0</i>	<i>360.6</i>	<i>366.4</i>	<i>113.1</i>	<i>35.5</i>	<i>62.7</i>	<i>4,103.7</i>
MARRIED FEMALES									
Under 3 months	35.9	28.7	14.7	7.2	11.1	2.5	*	} 3.2 {	103.6
3 months and under 6 months	30.4	20.8	17.6	4.9	7.7	*	2.7		86.9
6 months and under 1 year	40.0	33.4	21.3	11.3	12.8	2.3	*		3.5
<i>Total under 1 year</i>	<i>106.3</i>	<i>82.9</i>	<i>53.5</i>	<i>23.3</i>	<i>31.6</i>	<i>6.2</i>	<i>6.4</i>	<i>6.6</i>	<i>316.7</i>
1 year and under 2 years	71.0	48.6	26.6	17.6	17.8	4.4	3.2	} 2.6 {	193.9
2 years and under 3 years	50.4	40.8	21.3	10.2	11.6	5.2	2.6		143.1
3 years and under 5 years	81.0	65.0	31.2	20.2	20.7	7.8	4.8		232.4
5 years and under 10 years	104.9	99.3	49.9	37.4	27.3	10.1	7.1		338.7
10 years and over	79.9	62.2	27.4	23.9	18.9	5.4	*		220.1
<i>Total</i>	<i>493.5</i>	<i>398.8</i>	<i>209.9</i>	<i>132.7</i>	<i>128.0</i>	<i>39.1</i>	<i>15.1</i>	<i>27.9</i>	<i>1,444.9</i>
ALL FEMALES									
Under 3 months	87.6	68.7	40.3	19.2	26.1	6.0	3.9	3.2	255.0
3 months and under 6 months	60.3	44.9	29.9	11.4	15.3	2.5	4.3	3.1	171.7
6 months and under 1 year	79.1	60.6	41.3	20.5	24.1	4.8	2.5	5.8	238.7
<i>Total under 1 year</i>	<i>227.1</i>	<i>174.2</i>	<i>111.4</i>	<i>51.1</i>	<i>65.6</i>	<i>13.3</i>	<i>10.6</i>	<i>12.1</i>	<i>665.4</i>
1 year and under 2 years	130.7	89.9	54.5	33.3	32.5	8.2	3.8	7.7	360.5
2 years and under 3 years	90.3	74.8	37.5	18.9	20.1	7.9	} 3.9 {	4.2	255.4
3 years and under 5 years	124.3	99.9	49.2	32.9	31.0	11.8		7.0	358.4
5 years and under 10 years	143.7	128.2	65.1	46.9	34.9	13.0		8.7	444.3
10 years and over	108.2	85.4	37.8	28.9	23.4	6.8	*	3.9	295.0
<i>Total</i>	<i>824.2</i>	<i>652.5</i>	<i>355.5</i>	<i>212.1</i>	<i>207.4</i>	<i>61.0</i>	<i>22.6</i>	<i>43.6</i>	<i>2,378.9</i>
PERSONS									
Under 3 months	205.4	154.5	110.9	47.9	63.8	15.5	7.7	8.2	613.9
3 months and under 6 months	136.2	111.2	76.3	29.1	37.6	6.5	7.6	6.4	410.9
6 months and under 1 year	195.7	145.4	106.7	48.6	58.1	11.8	6.5	12.5	585.3
<i>Total under 1 year</i>	<i>537.3</i>	<i>411.1</i>	<i>293.9</i>	<i>125.7</i>	<i>159.4</i>	<i>33.7</i>	<i>21.9</i>	<i>27.1</i>	<i>1,610.1</i>
1 year and under 2 years	308.4	220.0	131.6	69.3	85.1	21.2	10.2	16.2	862.0
2 years and under 3 years	230.1	167.7	99.0	49.4	55.3	16.7	5.6	10.5	634.4
3 years and under 5 years	339.9	252.6	127.4	84.0	80.7	27.8	6.8	16.4	935.5
5 years and under 10 years	397.8	326.2	181.4	117.1	98.4	36.1	9.1	23.0	1,189.1
10 years and over	456.1	357.9	159.2	127.1	95.0	38.6	4.6	13.1	1,251.5
<i>Total</i>	<i>2,269.7</i>	<i>1,735.5</i>	<i>992.4</i>	<i>572.6</i>	<i>573.9</i>	<i>174.1</i>	<i>58.1</i>	<i>106.3</i>	<i>6,482.6</i>

TABLE 14. PERSONS EMPLOYED AT FEBRUARY 1982: DURATION OF CURRENT JOB AND INDUSTRY ('000)

<i>Duration of current job</i>	<i>Agriculture</i>	<i>Manufacturing</i>	<i>Construction</i>	<i>Wholesale and retail trade</i>	<i>Transport and storage</i>	<i>Finance, property, business services</i>	<i>Public administration and defence</i>	<i>Community services</i>	<i>Recreation personal and other services</i>	<i>Other industries</i>	<i>Total</i>
MALES											
Under 3 months	27.2	68.8	54.3	76.4	15.3	30.0	9.3	34.2	23.3	20.1	358.9
3 and under 6 months	11.2	55.2	29.9	53.8	14.9	23.9	8.9	13.2	14.8	13.4	239.2
6 and under 12 months	11.8	77.5	46.5	74.6	22.8	35.7	14.7	25.3	19.4	18.4	346.6
<i>Total under 1 year</i>	<i>50.2</i>	<i>201.5</i>	<i>130.7</i>	<i>204.9</i>	<i>53.0</i>	<i>89.7</i>	<i>32.9</i>	<i>72.6</i>	<i>57.5</i>	<i>51.8</i>	<i>944.7</i>
1 and under 2 years	25.2	113.1	60.7	99.1	33.4	49.7	17.5	46.1	24.8	31.7	501.4
2 and under 3 years	16.8	82.4	46.8	76.0	27.1	33.4	14.8	36.8	20.1	24.6	379.0
3 and under 5 years	32.8	125.2	59.1	115.9	39.2	45.1	29.0	60.7	24.9	45.2	577.1
5 and under 10 years	53.7	169.1	68.2	121.0	56.1	48.0	45.7	90.9	28.7	63.5	744.8
10 years and over	131.8	239.4	78.8	112.7	94.9	45.8	56.0	69.0	25.1	102.9	956.5
<i>Total</i>	<i>310.6</i>	<i>930.7</i>	<i>444.2</i>	<i>729.6</i>	<i>303.7</i>	<i>311.7</i>	<i>196.0</i>	<i>376.1</i>	<i>181.2</i>	<i>319.9</i>	<i>4,103.7</i>
FEMALES											
Under 3 months	7.2	26.8	5.3	68.3	*	30.6	8.7	66.6	35.0	*	255.0
3 and under 6 months	*	25.7	*	48.5	4.6	27.6	5.2	30.7	19.2	*	171.7
6 and under 12 months	7.1	33.0	4.9	65.4	4.5	32.6	6.5	49.6	29.7	5.2	238.7
<i>Total under 1 year</i>	<i>17.3</i>	<i>85.5</i>	<i>13.2</i>	<i>182.2</i>	<i>12.6</i>	<i>90.7</i>	<i>20.4</i>	<i>146.9</i>	<i>83.9</i>	<i>12.6</i>	<i>665.4</i>
1 and under 2 years	5.8	49.6	4.9	97.4	7.3	41.2	13.0	96.0	35.2	10.1	360.5
2 and under 3 years	6.8	33.5	6.2	59.3	6.5	29.1	12.2	72.2	23.0	6.4	255.4
3 and under 5 years	11.2	45.4	7.5	84.9	6.0	35.6	14.5	111.0	34.2	8.1	358.4
5 and under 10 years	18.8	68.8	11.5	83.8	9.7	44.1	26.0	144.1	29.0	8.5	444.3
10 years and over	46.1	40.8	10.7	54.0	9.3	16.9	10.9	76.7	19.7	9.9	295.0
<i>Total</i>	<i>105.9</i>	<i>323.7</i>	<i>54.0</i>	<i>561.6</i>	<i>51.4</i>	<i>257.7</i>	<i>97.0</i>	<i>647.0</i>	<i>225.1</i>	<i>55.5</i>	<i>2,378.9</i>
PERSONS											
Under 3 months	34.4	95.6	59.6	144.7	18.8	60.6	18.0	100.8	58.3	23.1	613.9
3 and under 6 months	14.2	80.9	32.8	102.4	19.6	51.5	14.1	43.9	33.9	17.7	410.9
6 and under 12 months	18.9	110.5	51.4	140.0	27.4	68.3	21.2	74.9	49.2	23.6	585.3
<i>Total under 1 year</i>	<i>67.5</i>	<i>287.0</i>	<i>143.8</i>	<i>387.1</i>	<i>65.7</i>	<i>180.4</i>	<i>53.3</i>	<i>219.5</i>	<i>141.4</i>	<i>64.4</i>	<i>1,610.1</i>
1 and under 2 years	31.0	162.7	65.7	196.4	40.7	91.0	30.5	142.2	60.0	41.8	862.0
2 and under 3 years	23.6	116.0	53.1	135.3	33.6	62.5	27.1	109.1	43.1	31.0	634.4
3 and under 5 years	44.1	170.6	66.5	200.8	45.1	80.7	43.5	171.7	59.1	53.3	935.5
5 and under 10 years	72.4	237.9	79.7	204.8	65.9	92.2	71.6	235.0	57.7	72.0	1,189.1
10 years and over	177.9	280.2	89.5	166.7	104.2	62.7	66.9	145.7	44.9	112.8	1,251.5
<i>Total</i>	<i>416.5</i>	<i>1,254.4</i>	<i>498.3</i>	<i>1,291.1</i>	<i>355.1</i>	<i>569.5</i>	<i>292.9</i>	<i>1,023.1</i>	<i>406.2</i>	<i>375.4</i>	<i>6,482.6</i>

TABLE 15. PERSONS EMPLOYED AT THE TIME OF THE SURVEY : DURATION OF CURRENT JOB AND OCCUPATION (' 000)

<i>Duration of current job</i>	<i>Professional and technical</i>	<i>Administrative, executive and managerial</i>	<i>Clerical</i>	<i>Sales</i>	<i>Farmers, fishermen, timber-getters, etc.</i>	<i>Transport and communication</i>	<i>Tradesmen, etc., n.e.c.(a)</i>	<i>Service, sport and recreation</i>	<i>Total</i>
MALES									
Under 3 months	44.6	15.6	28.4	30.4	31.9	19.2	164.0	24.9	358.9
3 months and under 6 months	21.7	18.4	17.1	21.6	14.4	17.0	112.1	16.9	239.2
6 months and under 1 year	42.3	31.0	25.0	27.4	17.4	22.7	159.2	21.5	346.6
<i>Total under 1 year</i>	<i>108.7</i>	<i>65.0</i>	<i>70.5</i>	<i>79.4</i>	<i>63.6</i>	<i>58.9</i>	<i>435.3</i>	<i>63.3</i>	<i>944.7</i>
1 year and under 2 years	64.8	36.1	41.2	44.0	30.1	29.0	228.7	27.4	501.4
2 years and under 3 years	49.2	29.8	32.9	29.8	22.2	28.2	161.4	25.5	379.0
3 years and under 5 years	78.7	52.5	48.5	45.8	40.0	36.6	243.5	31.5	577.1
5 years and under 10 years	102.3	71.8	58.1	41.7	60.8	59.6	308.0	42.6	744.8
10 years and over	110.2	93.5	77.7	35.1	139.6	81.2	386.1	33.2	956.5
<i>Total</i>	<i>514.0</i>	<i>348.8</i>	<i>328.9</i>	<i>275.8</i>	<i>356.2</i>	<i>293.4</i>	<i>1,763.0</i>	<i>223.5</i>	<i>4,103.7</i>
FEMALES									
Under 3 months	51.6	*	76.8	42.3	8.0	*	24.6	44.4	255.0
3 months and under 6 months	16.2	6.2	64.2	27.1	*	*	21.7	29.6	171.7
6 months and under 1 year	33.3	6.1	89.4	31.4	6.2	4.9	26.9	40.4	238.7
<i>Total under 1 year</i>	<i>101.1</i>	<i>16.3</i>	<i>230.4</i>	<i>100.8</i>	<i>17.5</i>	<i>11.5</i>	<i>73.3</i>	<i>114.5</i>	<i>665.4</i>
1 year and under 2 years	68.0	6.1	120.7	63.4	5.5	6.1	34.2	56.5	360.5
2 years and under 3 years	50.3	7.0	87.2	32.8	6.8	6.0	26.9	38.3	255.4
3 years and under 5 years	69.9	10.1	119.6	46.8	10.4	7.0	36.3	58.2	358.4
5 years and under 10 years	84.9	11.7	158.2	38.7	18.1	7.9	50.9	74.0	444.3
10 years and over	45.2	10.7	90.8	23.8	44.7	7.2	31.0	41.5	295.0
<i>Total</i>	<i>419.3</i>	<i>62.1</i>	<i>807.1</i>	<i>306.4</i>	<i>102.9</i>	<i>45.7</i>	<i>252.5</i>	<i>383.0</i>	<i>2,378.9</i>
PERSONS									
Under 3 months	96.2	19.6	105.2	72.7	39.8	22.3	188.6	69.4	613.9
3 months and under 6 months	37.9	24.6	81.3	48.7	17.6	20.5	133.8	46.5	410.9
6 months and under 1 year	75.6	37.1	114.4	58.8	23.6	27.6	186.2	61.9	585.3
<i>Total under 1 year</i>	<i>209.8</i>	<i>81.3</i>	<i>300.9</i>	<i>180.2</i>	<i>81.1</i>	<i>70.4</i>	<i>508.6</i>	<i>177.8</i>	<i>1,610.1</i>
1 year and under 2 years	132.9	42.3	161.9	107.4	35.5	35.1	262.9	83.9	862.0
2 years and under 3 years	99.5	36.8	120.1	62.6	29.0	34.3	188.2	63.9	634.4
3 years and under 5 years	148.6	62.7	168.1	92.6	50.4	43.6	279.8	89.7	935.5
5 years and under 10 years	187.2	83.6	216.3	80.4	78.9	67.4	358.8	116.5	1,189.1
10 years and over	155.4	104.3	168.5	58.9	184.3	88.4	417.1	74.7	1,251.5
<i>Total</i>	<i>933.3</i>	<i>410.9</i>	<i>1,136.0</i>	<i>582.1</i>	<i>459.2</i>	<i>339.2</i>	<i>2,015.5</i>	<i>606.5</i>	<i>6,482.6</i>

(a) Includes miners and quarrymen, tradesmen, production-process workers and labourers, n.e.c.

TABLE 16. DURATION OF CURRENT JOB, NOVEMBER 1972 TO FEBRUARY 1982

Duration of job	November 1972(a)	February 1975(a)	February 1976(b)	February 1979(b)	February 1980(b)	February 1981(a)	February 1982(a)	
	—per cent—							(' 000)
MALES								
Under 3 months	9.1	8.5	7.5	6.9	6.6	9.2	8.7	358.9
3 and under 6 months	4.6	4.2	5.2	6.9	5.3	5.6	5.8	239.2
6 and under 12 months	7.6	7.2	8.3	9.2	8.6	8.3	8.4	346.6
<i>Total under 1 year</i>	<i>21.3</i>	<i>19.9</i>	<i>20.9</i>	<i>22.9</i>	<i>20.5</i>	<i>23.1</i>	<i>23.0</i>	<i>944.7</i>
1 and under 2 years	13.3	13.1	11.4	12.2	12.5	12.6	12.2	501.4
2 and under 3 years	9.5	8.7	9.9	8.1	8.8	8.7	9.2	379.0
3 and under 5 years	11.9	11.8	15.0	14.9	14.2	14.1	14.1	577.1
5 years and over	44.1	46.5	42.8	41.9	43.9	41.6	41.5	1,701.4
<i>Total</i>	<i>100.0</i>	<i>100.0</i>	<i>100.0</i>	<i>100.0</i>	<i>100.0</i>	<i>100.0</i>	<i>100.0</i>	<i>4,103.7</i>
FEMALES								
Under 3 months	13.9	11.8	8.8	8.0	7.8	11.3	10.7	255.0
3 and under 6 months	6.6	6.1	7.0	7.8	6.2	6.7	7.2	171.7
6 and under 12 months	11.5	11.6	11.5	11.8	11.4	10.8	10.0	238.7
<i>Total under 1 year</i>	<i>32.1</i>	<i>29.5</i>	<i>27.3</i>	<i>27.6</i>	<i>25.3</i>	<i>28.8</i>	<i>28.0</i>	<i>665.4</i>
1 and under 2 years	18.2	20.0	16.1	15.7	15.8	16.0	15.2	360.5
2 and under 3 years	12.1	11.0	13.6	10.7	11.2	9.6	10.7	255.4
3 and under 5 years	12.9	12.9	16.8	17.1	17.1	15.8	15.1	358.4
5 years and over	24.8	26.6	26.2	28.8	30.5	29.9	31.1	739.3
<i>Total</i>	<i>100.0</i>	<i>100.0</i>	<i>100.0</i>	<i>100.0</i>	<i>100.0</i>	<i>100.0</i>	<i>100.0</i>	<i>2,378.9</i>
PERSONS								
Under 3 months	10.7	9.6	7.9	7.3	7.0	9.9	9.5	613.9
3 and under 6 months	5.2	4.8	5.8	7.2	5.6	6.0	6.3	410.9
6 and under 12 months	8.9	8.7	9.4	10.1	9.6	9.2	9.0	585.3
<i>Total under 1 year</i>	<i>24.9</i>	<i>23.1</i>	<i>23.1</i>	<i>24.6</i>	<i>22.3</i>	<i>25.1</i>	<i>24.8</i>	<i>1,610.1</i>
1 and under 2 years	14.9	15.4	13.0	13.4	13.7	13.8	13.3	862.0
2 and under 3 years	10.3	9.5	11.1	9.0	9.7	9.0	9.8	634.4
3 and under 5 years	12.2	12.1	15.6	15.7	15.3	14.7	14.4	935.5
5 years and over	37.7	39.8	37.3	37.3	39.0	37.3	37.6	2,440.6
<i>Total</i>	<i>100.0</i>	<i>100.0</i>	<i>100.0</i>	<i>100.0</i>	<i>100.0</i>	<i>100.0</i>	<i>100.0</i>	<i>6,482.6</i>

(a) Refers to time in their current job of persons employed at the time of the survey. (b) For persons in the survey who were employed at the end of the previous calendar year, time in job held at end of previous calendar year.

TABLE 17. MOBILITY(a) ACROSS INDUSTRY AND OCCUPATION NOVEMBER 1972 TO FEBRUARY 1982

	November 1972(b)	February 1976(c)	February 1979(c)	February 1980(c)	February 1981(b)	February 1982(b)	
	—per cent—						(' 000)
MALES							
In current job for less than one year	21.3	20.9	22.9	20.5	23.1	23.0	944.7
Had no other job in the period	3.9	4.4	6.0	6.3	6.3	5.8	238.8
Changed jobs during the period	17.4	16.5	17.0	14.3	16.8	17.2	706.0
Changed industry group(a)	7.9	7.3	8.5	6.3	7.1	7.0	287.5
Did not change industry group(a)	9.5	9.2	8.5	8.0	9.7	10.2	418.5
Changed occupation group(a)	5.3	5.5	7.3	4.7	5.1	4.8	198.4
Did not change occupation group(a)	12.1	11.0	9.7	9.6	11.7	12.4	507.5
FEMALES							
In current job for less than one year	32.1	27.3	27.6	25.3	28.7	28.0	665.4
Had no other job in the period	14.8	13.1	13.8	12.8	13.7	12.3	292.9
Changed jobs during the period	17.3	14.2	13.8	12.5	15.1	15.7	372.4
Changed industry group(a)	8.3	6.4	7.7	5.3	6.6	7.0	165.8
Did not change industry group(a)	9.1	7.8	6.1	7.2	8.4	8.7	206.6
Changed occupation group(a)	5.4	4.4	5.8	3.9	4.8	5.0	119.6
Did not change occupation group(a)	11.9	9.8	8.0	8.6	10.3	10.6	252.9
PERSONS							
In current job for less than one year	24.9	23.1	24.6	22.3	25.1	24.8	1,610.1
Had no other job in the period	7.5	7.4	8.7	8.6	9.0	8.2	531.7
Changed jobs during the period	17.4	15.7	15.9	13.6	16.2	16.6	1,078.4
Changed industry group(a)	8.0	7.0	8.2	5.9	6.9	7.0	453.3
Did not change industry group(a)	9.3	8.7	7.6	7.7	9.3	9.6	625.1
Changed occupation group(a)	5.3	5.1	6.8	4.4	5.0	4.9	318.0
Did not change occupation group(a)	12.0	10.6	9.1	9.2	11.2	11.7	760.4

(a) As shown in Tables 5 and 6. (b) As a proportion of all persons employed at the time of the survey. (c) As a proportion of all persons employed at the end of the calendar year prior to the survey.

TABLE 18. JOB MOBILITY FEBRUARY 1976 TO FEBRUARY 1982
(per cent)

Whether changed employer or business and whether changed locality(a)	February 1976(b)	February 1977(b)	February 1979(b)	February 1980(b)	February 1981(c)	February 1982(c)
MALES						
Changed employer but not locality	14.2	13.9	12.7	12.0	13.5	13.7
Changed both employer and locality	0.8	1.0	1.2	1.3	0.8	0.9
Changed locality but not employer	3.5	3.8	3.9	3.5	3.1	3.3
Did not change employer or locality	81.4	81.3	82.2	83.3	82.6	82.0
FEMALES						
Changed employer but not locality	12.4	12.2	10.4	10.3	11.8	12.5
Changed both employer and locality	0.5	0.6	0.8	1.3	0.7	0.8
Changed locality but not employer	2.1	2.5	2.6	2.5	2.5	2.5
Did not change employer or locality	85.0	84.8	86.2	85.9	85.0	84.3
PERSONS						
Changed employer but not locality	13.5	13.3	11.8	11.3	12.8	13.2
Changed both employer and locality	0.7	0.8	1.1	1.3	0.8	0.9
Changed locality but not employer	3.0	3.3	3.4	3.1	2.9	3.0
Did not change employer or locality	82.8	82.6	83.7	84.3	83.5	82.9

(a) See Explanatory notes, paragraph 10 and Table 2, page 5, for definitions. This information was not collected prior to the February 1976 survey. (b) As a proportion of persons in the survey who had been employed at some time during the calendar year prior to the survey. (c) As a proportion of persons in the survey who had been employed at some time during the previous twelve months.

TECHNICAL NOTE

Estimation procedure

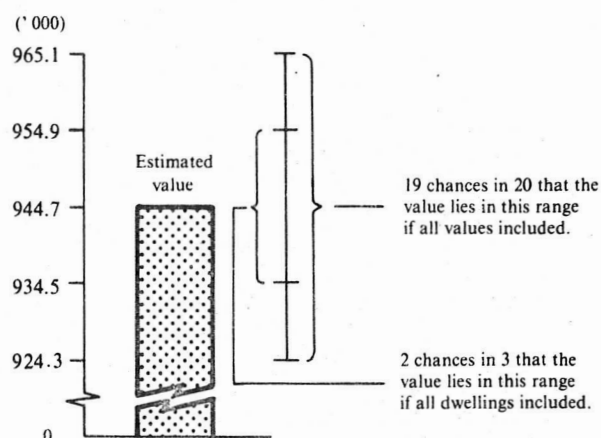
The estimates are derived from the population survey by use of a ratio estimation procedure which ensures that the estimates conform to an independently estimated distribution of the population for each capital city and remainder of State by age and sex, rather than to the corresponding distribution within the sample itself.

Reliability of the estimates

2. Since the estimates in this publication are based on information obtained from occupants of a sample of dwellings, they are subject to sampling variability; that is, they may differ from the figures that would have been produced if all dwellings had been included in the survey. One measure of the likely difference is given by the *standard error*, which indicates the extent to which an estimate might have varied by chance because only a sample of dwellings was included. There are about two chances in three that a sample estimate will differ by less than one standard error from the figure that would have been obtained if all dwellings had been included, and about nineteen chances in twenty that the difference will be less than two standard errors. Another measure of the likely difference is the *relative standard error*, which is obtained by expressing the standard error as a percentage of the estimate.

3. Space does not allow for the separate indication of the standard errors of all estimates in this publication. A table of standard errors for general application is given on the following page. Since they are averages based on calculations for a limited number of past surveys over a wide range of labour force characteristics, these figures will not give a precise measure of the standard error of a particular estimate but they will provide an indication of its magnitude.

4. An example of the calculation and the use of standard errors in relation to estimates of persons is as follows. From Table 17 on the previous page, the estimated number of males who, in February 1982, had been in their current job for less than one year is 944,700. Since this estimate is between 500,000 and 1,000,000 in the standard error table, the standard error for Australia will be between 8,250 and 10,400 and can be approximated as 10,200 (rounded to the nearest 100). Therefore, there are about two chances in three that the value that would have been produced if all dwellings had been included in the survey will fall in the range 934,500 to 954,900 and about nineteen chances in twenty that the value will fall within the range 924,300 to 965,100. This example is illustrated in the following diagram.



5. As can be seen from the standard error table, *the smaller the estimate the higher is the relative standard error*. Very small estimates are thus subject to such high standard errors (relative to the size of the estimate) as to detract seriously from their value for most reasonable uses. In the tables in this publication, estimates less than the lowest levels shown in the standard error table have not been published. Although figures for these small components can in some cases be derived by subtraction, they should not be regarded as reliable.

6. Proportions and percentages formed from the ratio of two estimates are also subject to sampling error. The size of the error depends on the accuracy of both the numerator and the denominator. The formula for the relative standard error (RSE) of a proportion is given below:

$$\text{RSE}(x/y) = \sqrt{[\text{RSE}(x)]^2 + [\text{RSE}(y)]^2}$$

7. Considering the example from paragraph 4, the 944,700 males represent 23.0 per cent of the 4,103,700 males employed at February 1982. The standard error of 4,103,700 is approximately 15,800 so the relative standard error is 0.4 per cent. The relative standard error for 944,700 is 1.1 per cent. Applying the above formula, the relative standard error of the proportion is $\sqrt{(1.1)^2 + (0.4)^2}$ or 1.0 per cent, giving a standard error for the proportion (23.0 per cent) of 0.2 percentage points. Therefore, there are about two chances in three that the proportion of males who had been in their current job for less than one year is between 22.8 per cent and 23.2 per cent and nineteen chances in twenty the proportion is within the range 22.6 per cent to 23.4 per cent.

8. Published figures may also be used to estimate the difference between two survey estimates (of numbers or percentages). Such a figure is itself an estimate and is therefore subject to sampling error. The sampling error of the difference between two estimates depends on their standard errors and the relationship (correlation) between them. An approximate standard error (SE) of the difference between two estimates ($x-y$) may be calculated by the following formula:

$$SE(x-y) = \sqrt{[SE(x)]^2 + [SE(y)]^2}$$

While this formula will only be exact for differences between separate and uncorrelated characteristics or subpopulations it is expected to provide a good approximation for all differences likely to be of interest in this publication.

9. The imprecision due to sampling variability, which is measured by the standard error, should not be confused with inaccuracies that may occur because of imperfections in reporting by interviewers and respondents and errors made in the coding and processing of data. Inaccuracies of this kind are referred to as the *non-sampling error*, and they may occur in any enumeration, whether it be a full count or only a sample.

STANDARD ERRORS OF ESTIMATES

Size of estimate	N.S.W.	Vic.	Qld	S.A.	W.A.	Tas.	N.T.	A.C.T.	Australia	
									—number—	Relative standard error (per cent)
1,500						350				
2,300				550	550	400	550	550		
3,000				650	650	450	650	600		
3,500			850	650	700	500	700	600		
4,000			900	700	700	500	700	650		
4,500			950	750	750	550	750	700	1,100	24.9
5,000	1,200	1,250	1,000	800	800	550	800	700	1,200	23.6
6,000	1,350	1,350	1,050	850	850	600	850	750	1,300	21.5
7,000	1,450	1,400	1,150	900	900	650	900	800	1,400	19.9
10,000	1,700	1,650	1,350	1,050	1,050	750	1,050	850	1,650	16.5
20,000	2,350	2,200	1,750	1,350	1,400	950	1,350	1,050	2,250	11.3
50,000	3,400	3,100	2,500	1,850	1,900	1,250	1,900	1,300	3,400	6.8
100,000	4,450	4,000	3,250	2,350	2,400	1,450	2,450	1,450	4,500	4.5
200,000	5,750	5,050	4,100	2,950	2,950	1,750		1,600	5,900	2.9
300,000	6,650	5,700	4,700	3,300	3,300				6,850	2.3
500,000	7,900	6,650	5,550	3,850	3,800				8,250	1.6
1,000,000	9,800	8,050	6,850						10,400	1.0
2,000,000	12,000	9,650							13,000	0.7
5,000,000	15,350	11,850							17,050	0.4

Estimates below the levels indicated have not been published, see paragraph 5 above.

